

## Thanks to Our Partners

Alaska Training Cooperative • University of Alaska Anchorage

## Funding

Alaska Mental Health Trust Authority • Alaska State Department of Education and Early Development • Health Resources and Services Administration

## Barrow Camps (Northwest AHEC)

North Slope Borough Health Department • Alaska Women in Crisis • Teenlines “Teens Helping Teens” • Instructor Jackie Ward • Counselor Simon Aina

## Fairbanks Camp (Program Office)

University of Alaska Fairbanks • UAF Community and Technical College Human Services Program • Fairbanks Native Association • Turning Point Counseling • Tanana Chiefs Conference, Wellness and Prevention Program • Hope Counseling • Instructors Laverne Demientieff, Jessica Black, Larry Roberts, Susan Renes, Retchenda George-Bettisworth • Elders Elizabeth Fleagle, Luke Titus, Fred John, Anna Frank

## Anchorage Camp (Southcentral AHEC and Program Office)

Alaska Native Tribal Health Consortium • Alaska Commission on Postsecondary Education • Providence Health and Services, Alaska (Behavioral Health Services) • Providence Family Medical Center • Instructor Gloria Burnett • Counselor Rashayne Zimmer

## For more information

Gloria Burnett, Director  
gburnett3@alaska.edu  
907-786-6705

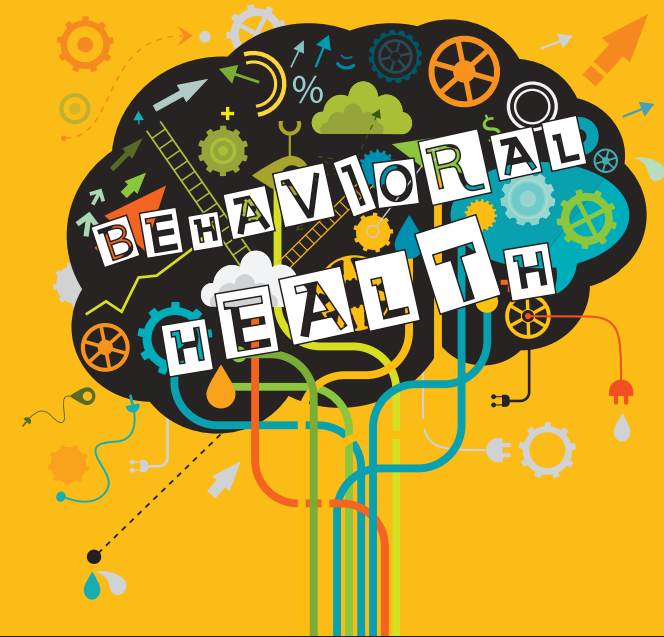
Dave Berry, Education Coordinator  
drberry@alaska.edu  
907-786-4853

<https://www.uaa.alaska.edu/academics/college-of-health/departments/ACRHHW/acrh-ahec/careers.cshtml>

## Apply online

<http://bit.ly/BehavioralHealthCamps>

# Alaska's Area Health Education Centers



# Behavioral Health Career Pathways for High-School Students

**AlaskaAHEC**  
Area Health Education Centers

## About Behavioral Health Camps

Alaska's first Behavioral Health Camp took place in Barrow in 2015. Nineteen students, ages 15-21, spent five days learning about careers in the behavioral health field. Topics included wellness techniques, abuse, neglect, addiction, grief, stress and mental health. Students earned one college credit for participating.



The program was so successful that it expanded to three sites in 2016. The 2016 cohort met in Barrow, Fairbanks and Anchorage to hear from social workers, counselors, psychologists, psychiatrists and behavioral health aides, among others. Students had the opportunity to explore many hands-on activities related to potential healthcare careers.

The 2017 program will include sites in Nome, Bethel, Ketchikan and Anchorage. Alaska's AHEC has established a goal of training 165 students by 2020.

## About Alaska's AHEC

Alaska's Area Health Education Centers (AHEC) aim to promote healthcare careers across the state by encouraging middle- and high-school students to consider studying any of the many professions in the field. In addition to providing Behavioral Health Camps, the centers also manage the Rural Immersion Institute of the North (for undergrads) and partner with educational institutions in a wide variety of programs.

For practicing healthcare professionals, AHEC provides workforce development and continuing education, as well as coordinating and advertising opportunities offered by third parties.



## By the Numbers

Total participants to date: 64  
Participants in 2015: 19  
Participants in 2016: 45

Participants who reported an increase in interest in behavioral health: 83%

Participants who reported an increase in knowledge about behavioral health: 95%

Participants now certified in mental health first aid: 100%

Participants who earned at least one college credit: 61

Participants who earned college credit for PSY150: Lifespan Development: 3

Similar programs based on the Alaska curriculum: 2 (in Montana and Washington)

Award nominations: 1 (for *New Rural: Innovations in Rural Health Award*)

Conference presentations: 2 (at 2015 Pathways Into Healthcare Conference and 2016 National AHEC Organization Conference)

